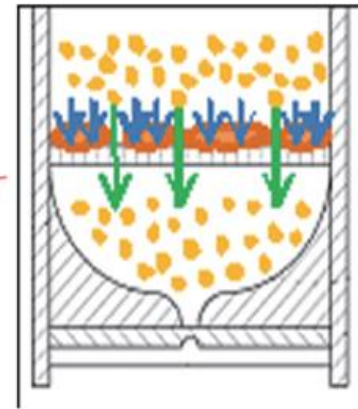
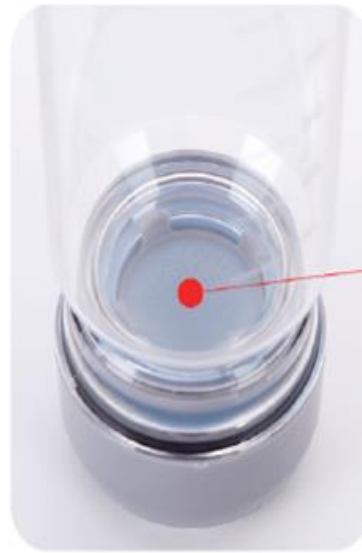


The logo for STEMPIA features a red, curved, swoosh-like graphic on the left side. To its right, the word "STEMPIA" is written in a bold, black, italicized sans-serif font.

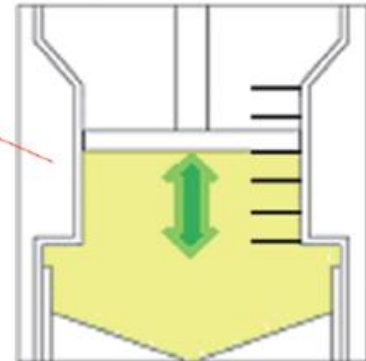
**STEMPIA**

## 1<sup>st</sup> Kit : Isolation tube



-  Tissue
-  SVF pellet

## 2<sup>st</sup> Kit : Concentration tube



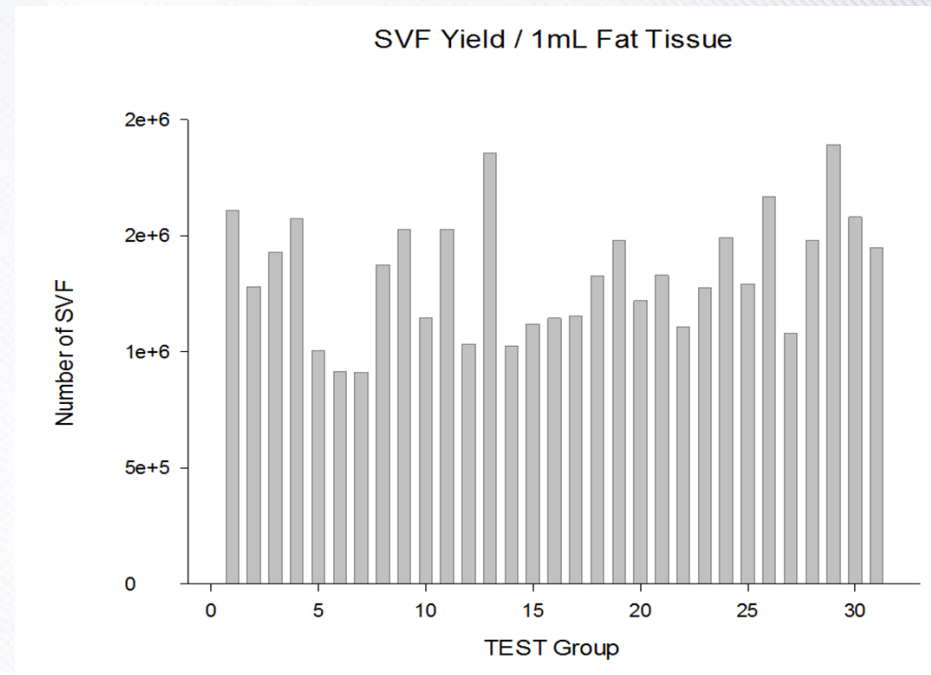
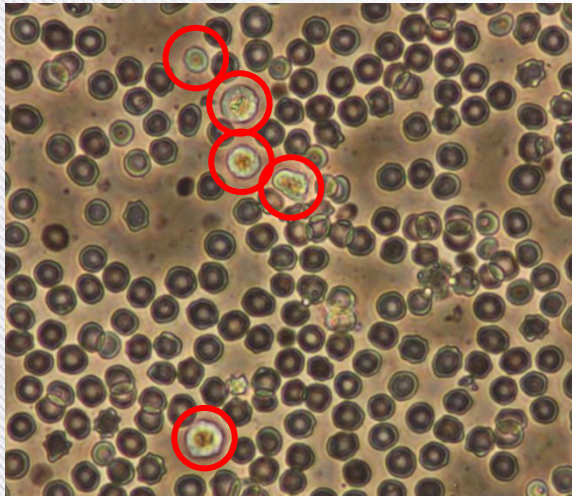
4~9mL

# Product performance – Cell Yield



STEMPIA can get a large amount of stem cells.

Since the SVF contains 2 to 10 % of the stem cells, it is advantageous to obtain a large amount of SVF.



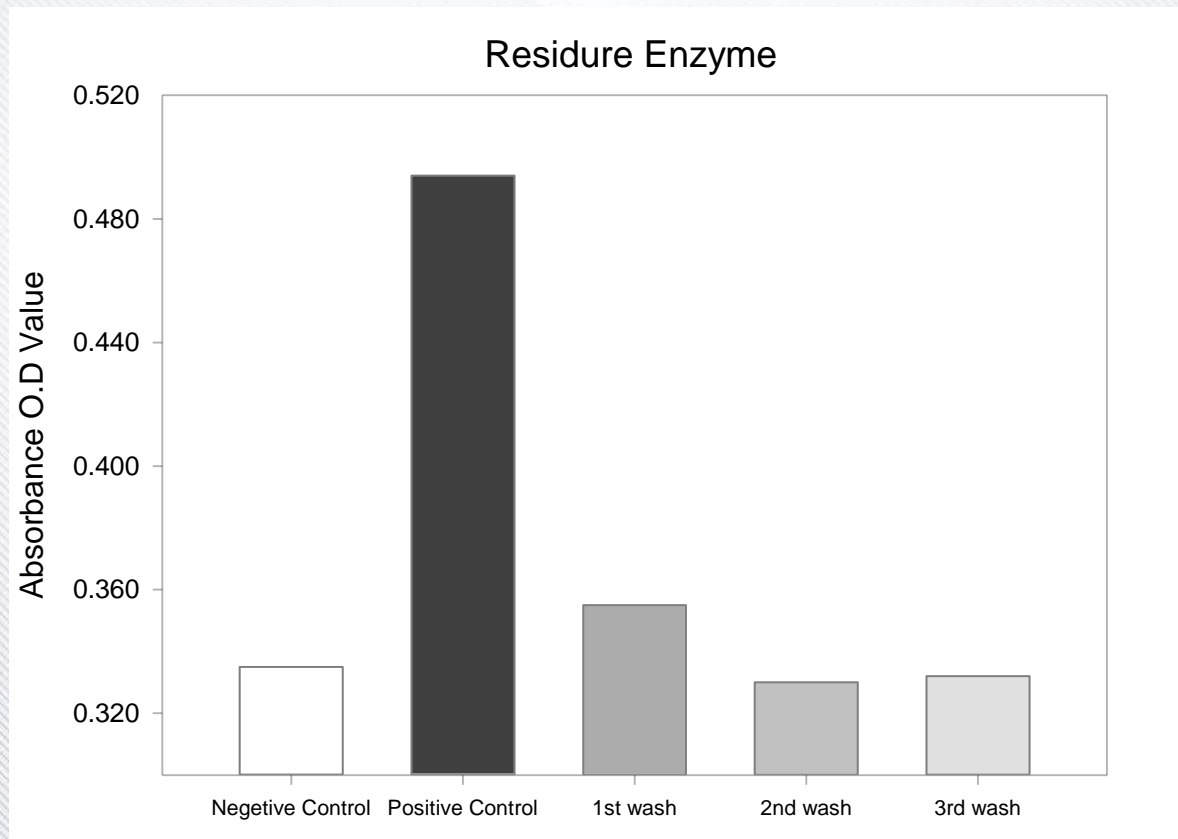
**31 Test Average Number of SVF :  $1.33 \times 10^6$  Cells / 1mL Fat tissue**

Average number of SVF averages from other companies :  $3.6 \times 10^5$  Cells / 1mL Fat tissue  
(Auto-station)



Examine the amount of residual oil according to the number of washing cycles.

Collagenase is not maintained if you use STEMPIA to wash more than 3 times.



# Strong Point



**01**

High levels of cell yield and viability

**02**

Safety protection from contamination

**03**

It is made of medical devices and harmless to the human body

**04**

Simple and easy accessibility to SVF Isolation

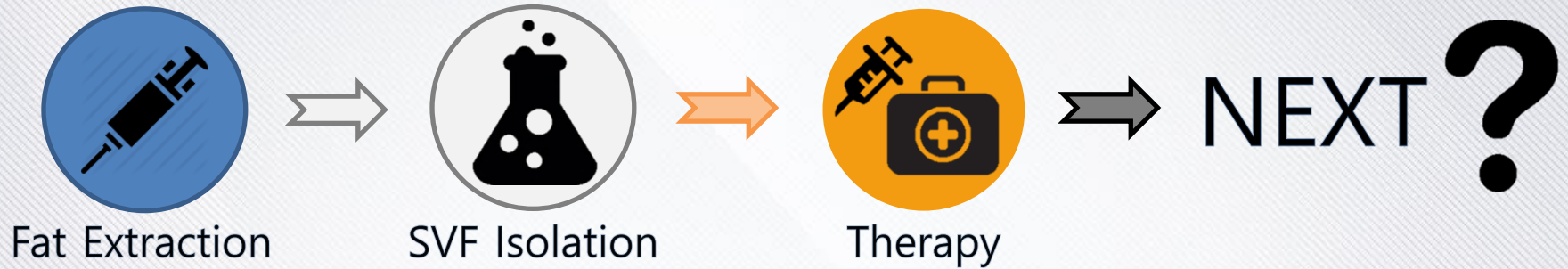
**05**

Save SVF isolation time

**06**

Compatible with third-party equipment

# Question?



! Cell banking

! Cell culture (CPC : Cell Processing Center)

# STEMPIA vs Manual Equipment & Supplies



VS





# STEMPIA vs Manual

Researcher with technique



**VS**



**THANK YOU**  
for your  
**ATTENTION!**